

## ZÜRN 160

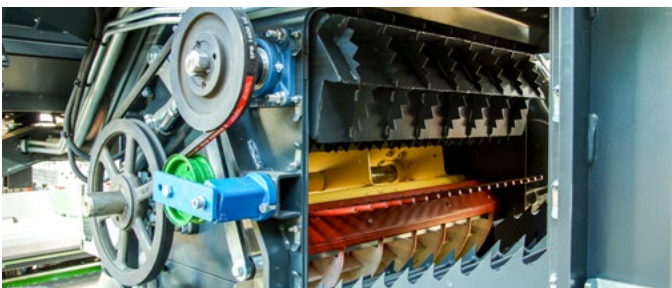
Plot combine harvester.

INNOVATION  
Made to last.



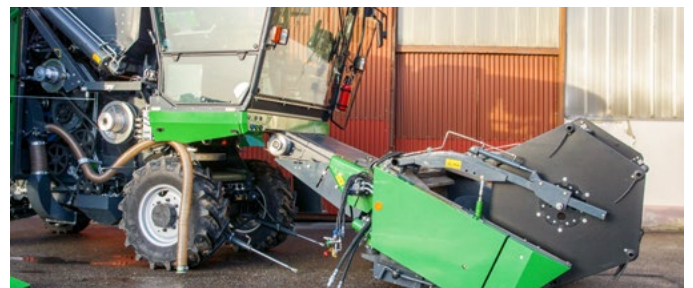
## The new class of plot combine harvesters

Modern machine concept for exceptional requirements.



### Efficient and gentle threshing

138° wrapping angle and 450 mm drum diameter are the basis for perfect threshing. The rear straw beater is synchronised with the drum to ensure an optimum cropflow in all crops without damaging delicate seeds.



### Best accessibility for cleaning and maintenance

Full access to the internal components: The chain feederhouse can be dismantled in 5 minutes. Maintenance is easily done through large service openings and use of premium components allows long service intervals.





**Clean sample in all conditions**

Four walkers with integrated return pans and two steps each offer 1.9 m<sup>2</sup> separation surface. The long sieves are adjustable in angle individually. A high step from the conveyor belt ensures effective wind screening before the crop enters the sieves.



**Modular weighing system and quick cycle time**

The extractable weighing system module can be equipped individually. Besides the ZÜRN WieSEL, there are other systems like HarvestMaster and Schlingmann available. Two turbines supply a strong airflow for high throughputs.



**Perfect power distribution**

The 4.5 litre John Deere engine with reversible fan has high torque reserves. A direct driveline transfers the power efficiently: up to 54 hp on the drum and 40 hp for the feederhouse and header.



**Maximum traction and stability**

Powerful ground drive with central hydraulic motor and mechanical differential lock. The multi-link rear axle with 4WD adapts to the ground with a huge swing angle. Minimum ground compaction is achieved with large wheels.



**Simple and safe transport**

The robust chassis with lattice structure offers eight high positioned lashing points. Despite the large wheels, only 3 m overall height allow quick loading without any modifications.



**Highest operator comfort**

The modern cab has an intelligent space concept for driver, operator and sample logistics. All controls including the multifunction lever are integrated into the armrest ergonomically.



Zürn Harvesting GmbH & Co KG

Field Research Technology · Domäne Hohebuch 5 · 74638 Waldenburg · Germany  
Tel.: +49 (0) 7942 94736-0 · Fax: +49 (0) 7942 94736-10

info@zuern.de · www.zuern.de

This literature has been compiled for worldwide circulation. Some illustrations and text may include product options and accessories not available in all regions. Please contact your local dealer for details. Zürn Harvesting reserves the right to change specification and design to products described in this literature without notice.

EN | ZÜRN 160 | 01/2020

**ZÜRN**  
HARVESTING

